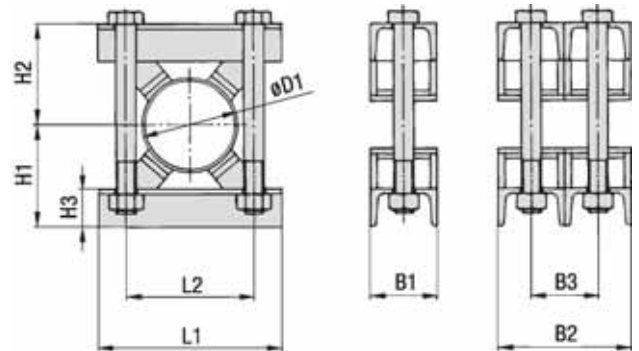
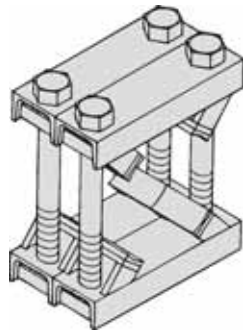
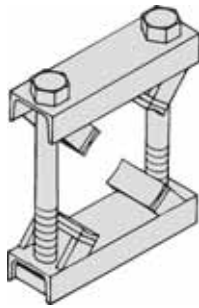


Construção 2 peças soldadas com sapatas de plástico

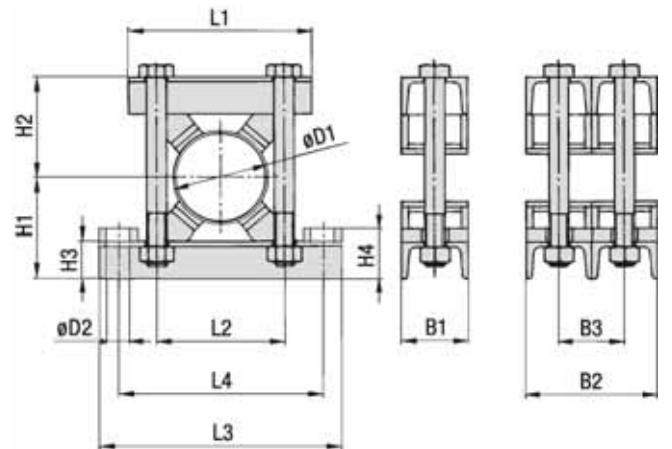
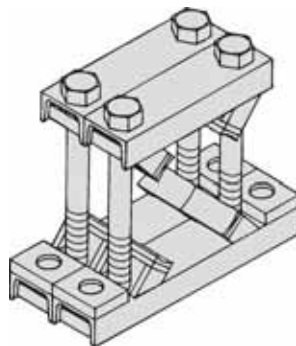
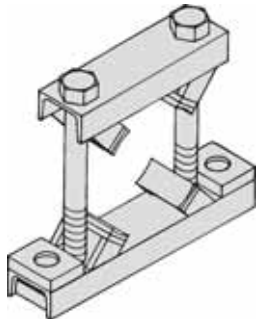


### KSV

(para fixação por parafuso de

### DKSX

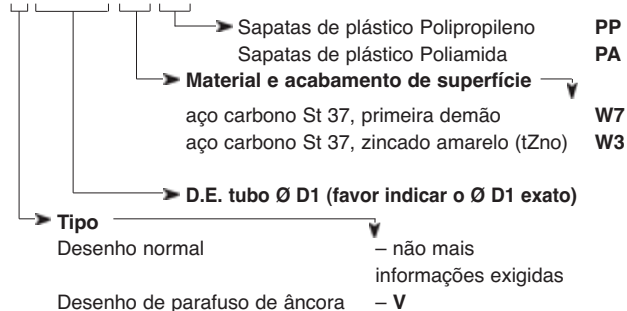
(para fixação por parafuso de âncora)



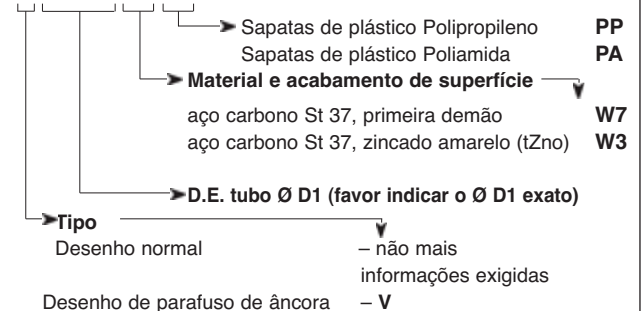
D.E. tubo Ø D1 em mm	L1	L2	L3	L4	H1	H2	H3	H4	B1	B2	B3	D2	Parafuso Sextavado	Número sapatas de plástico
220 a 275	420	330	580	490	220	220	60	90	140	290	150	35	M30 x 420	4
276 a 325	460	370	620	530	240	240	60	90	140	290	150	35	M30 x 460	4
326 a 370	510	420	670	580	260	260	60	90	140	290	150	35	M30 x 500	4
371 a 425	570	480	750	640	290	290	60	90	140	290	150	35	M30 x 560	4
426 a 485	620	530	800	730	305	305	60	90	140	290	150	35	M30 x 590	4
486 a 550	680	590	860	790	370	370	60	90	140	290	150	35	M30 x 720	4
551 a 630	760	670	940	870	410	410	60	90	140	290	150	35	M30 x 800	5
631 a 715	845	755	1025	955	452	452	60	90	140	290	150	35	M30 x 884	5
716 a 800	940	850	1120	1050	495	495	60	90	140	290	150	35	M30 x 970	5

## CÓDIGO PARA PEDIDO

**KSx \*\*\*\* xx xx**



**DKSx \*\*\*\* xx xx**



Outros materiais e diâmetros externos sob consulta.