

Basic module type PVBZ - HS (Hitch Single-acting)

INTRODUCTION

The PVG 32 valve was originally launched on the market in 1988 with a range of high performance electrical actuators. In the late nineties, the program was extended to also include new features such as low leak ports, special inlet sections and special electro hydraulic actuator options.

The special PVBZ - HS load and pressure compensated module was developed for applications, which need a valve slice for standard single acting cylinders.

Applications examples are:

- Rear-Hitch on tractors
- Headers on combines & harvesters

The new PVBZ-HS basic module can be mixed with basic modules PVB/ PVBZ (with additional tank line TO) and offers the following features.

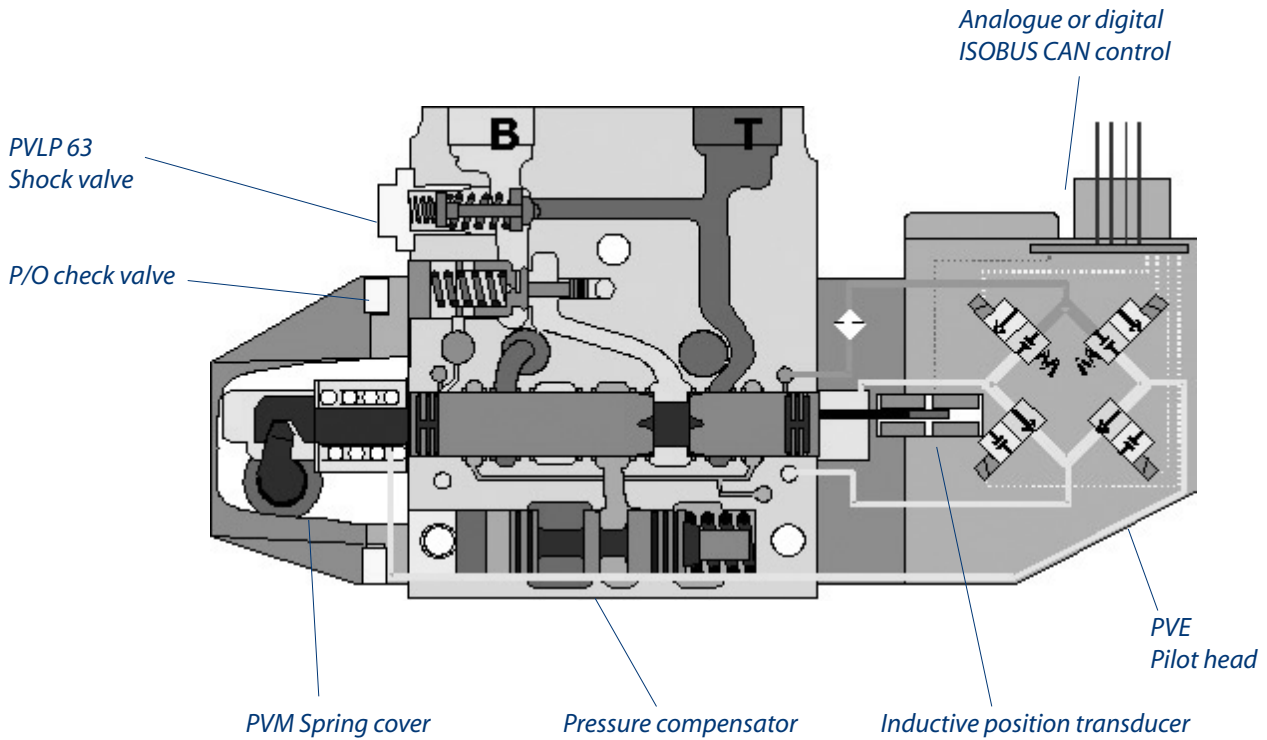


Features

- Low leakage work port
- Special 3/3 spools
- Separated tankport
- Integrated PVLP 63 shock /anti cavitation valve

Local address:

PVG-32 hitch single-acting valve module



Max. pressure	Port P	continuous	250 bar	[3625 psi]
	Port B		280 bar	[4061 psi]
	Port T, static/dynamic		25 bar/40 bar	[365/580 psi]
Oil flow, rated	Port P		140/230 l/min	[37/61 US gal/min]
	Port B, with press. comp.		100 l/min	[26.4 US gal/min]
Spool travel, standard			± 7 mm	[±0.28 in]
Dead band, flow control spool	Standard		± 0.8 mm	[±0.03 in]
Max. internal leakage at 150 bar [2175 psi] and 21 mm ² /s [102 SUS]	B → T, without shock valve:		1.0 cm ³ /min	[0.06 in ³ /min]
	B → T, with shock valve:		6.0 cm ³ /min	[0.37 in ³ /min]
Oil temperature (inlet temperature)	Recommended temperature		30 → 60°C	[86 → 140°F]
	Min. temperature		-30°C	[-22°F]
	Max. temperature		+90°C	[194°F]
Ambient temperature			-30 → +60°C	[-22 → +140°F]
Oil viscosity	Operating range		12 - 75 mm ² /s	[65 - 347 SUS]
	Min. viscosity		4 mm ² /s	[39 SUS]
	Max. viscosity		460 mm ² /s	[2128 SUS]
Filtration	Max. contamination (ISO 4406)		19/16	19/16