



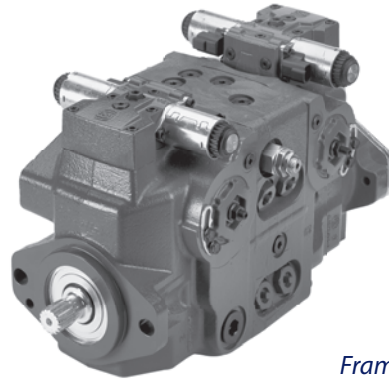
## H1-The new Generation of Hydrostatics 045/053 cm<sup>3</sup> Tandem Pumps

### Introduction

For more than 40 years, Sauer-Danfoss has been developing state-of-the-art components and systems for mobile machinery used in off-highway operations around the world. We have become a preferred supplier by offering the best of what really matters: The hardware inside your vehicle application. H1 - our new generation of servo-controlled hydrostatic pumps - is no exception.

The H1 range is built around an advanced electrical control and available in a wide range of displacements. It is designed for quality and reliability and offers expanded functionality, greater total efficiency, and easy installation.

All H1 control and sensor options are PLUS+1 Compliant. PLUS+1 allows you to rapidly develop and customize electronic machine control. It opens up the future by combining machine controls and diagnostics in an integrated operating network.



*H1 Axial piston pump  
Frame size 045/053 tandem pump*

### Features

- **Designed for quality and reliability**
  - One design concept
  - Single piece swash plate
  - Integrated auxiliary pad
- **Installation and packaging benefits**
  - Length optimized pump
  - Minimum one clean side
  - Higher corner HP/package size ratio
  - Standardized connector interface
  - Expanded functionality through PLUS+1
  - High strength mounting flange
- **Optimized for electrical control**
  - Electro-hydraulic control options include Electrical Displacement Control (EDC) and Forward-Neutral-Reverse (FNR)
  - Common control across entire family
- **Expanded functionality**
  - Full compliment of diagnostic ports including case pressure
  - PLUS+1 Compliant control and sensor options
  - Control Cut Off (CCO) valve with integral logic (brake) port
- **Greater total efficiency**
  - Minimized control losses
  - Lower control pressure for less power consumption
  - Reduced charge pressure rise rate between idle and high idle

Local Address:

### Technical Specifications

#### Physical properties

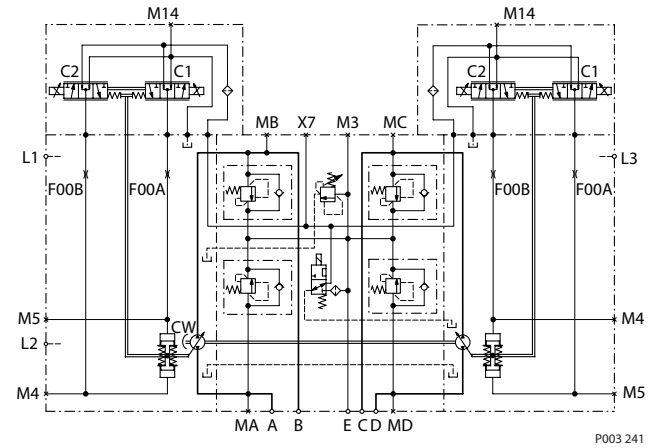
Features	Unit	Frame Sizes	
		045	053
Displacement	cm <sup>3</sup> [in <sup>3</sup> ]	45 [2.75]	53.8 [3.28]
Weight (without PTO and filter)	kg [lb]	65.7 [144.8]	

#### Operating parameters

Input Speed	Minimum	min-1 (rpm)	500	
	Rated		3400	
	Maximum		3500	
System Pressure	Rated*	bar [psi]	400 [5800]	350 [5075]
	Maximum		420 [6090]	400 [5800]
	Minimum low loop		10 [150]	
Case Pressure	Rated	bar [psi]	2.0 [29]	
	Maximum		5.0 [75]	

\* Applied pressures above Rated requires Sauer-Danfoss application approval.

### Schematic



### Dimensions

#### Option: Control Cut Off valve (CCO)

